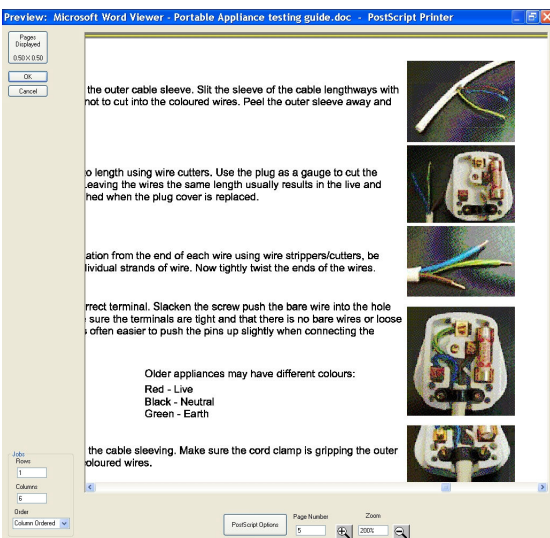
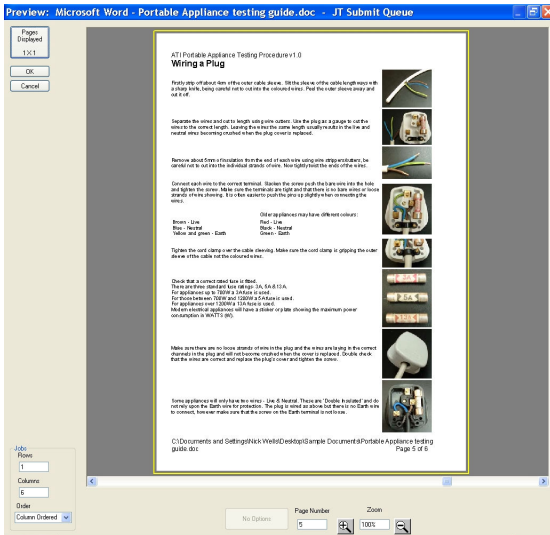
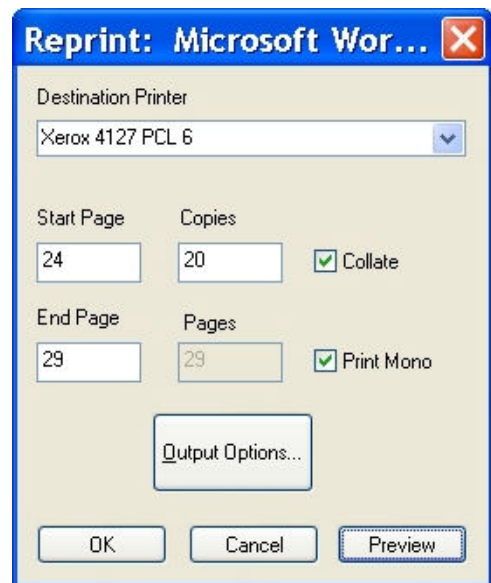


**doc-Q-view PCL** and **doc-Q-view PostScript** are snap-in modules for doc-Q-manager. The standard product provides job preview and reprint functionality for native Windows EMF and ASCII data formats. These two **doc-Q-view** snap-ins provide the same functionality for data streams that are PCL or PostScript encoded.



**Preview**

Job preview allows jobs or sections of a job to be previewed and browsed prior to printing to ensure the correct item or version has been selected. The preview function includes options for multi-page thumbnail display, moving the display and a zoom facility to check detail where required.



**Reprint**

Using the reprint feature, any page or range of pages of a job may be selected for reprint without having to revert to the host application. Reprints may be to the same queue as the original or to another. The function includes options for choosing multiple copies of the section to reprint, as well as options to collate or not. Whilst reprinting a job the finishing options may also be changed. Colour jobs may also be proofed in monochrome.

**Data streams supported**

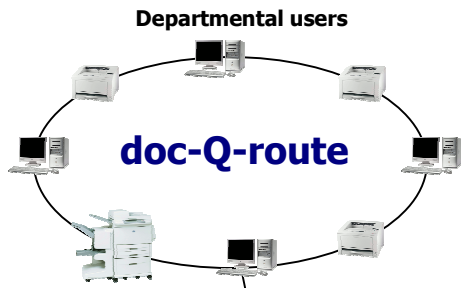
PCL support:  
PCL5e, 5c and PCL-6/XL and all previous versions

PostScript support:  
Level 3 and all previous versions

**Features of doc-Q-view**

- Supports PCL & PostScript encoded print datastreams
- PCL support PCL5e, 5c and PCL-6/XL and all previous versions
- PostScript support Level 3 and all previous versions
- Preview jobs before print or reprint
- Multi page display and zoom options
- Reprint any page(s) without reverting to host application

## Software to control document and transactional printing



Control the use of colour, route jobs to the most cost effective printer, or transfer via job ticket to repro or print room

### doc-Q-ticket

**Document printing**  
MS Word, MS Excel, Reports, etc.

**Host printing system**  
AS400, Unix, Windows



Send variable data jobs directly, or via forms software, to CRD or print room

### doc-Q-forms

**Transactional printing**  
Invoices, payroll, business applications

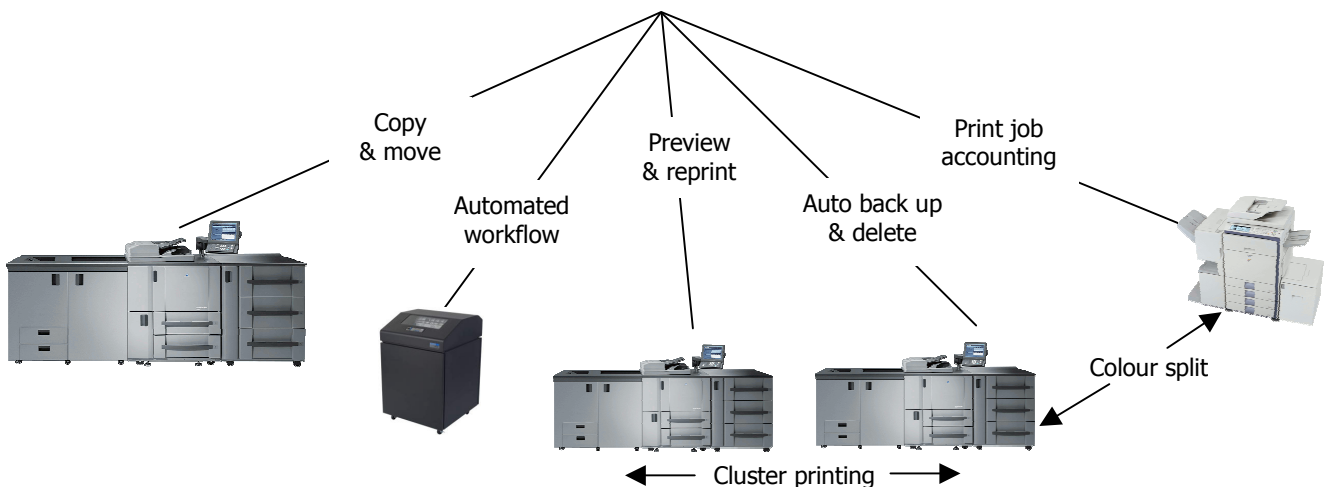
## doc-Q-manager

### doc-Q-view

### doc-Q-split

### Print job management

Central Reprographics Department / Print Room



**ADVANCED TECHNOLOGIES INTERNATIONAL, 893 PLYMOUTH ROAD, SLOUGH, BERKSHIRE, SL1 4LP**

web: [www.ati-uk.com](http://www.ati-uk.com) email: [dqm\\_info@ati-uk.com](mailto:dqm_info@ati-uk.com)

Tel: 0845 88 55 111 (from outside UK +44 (0) 1753 566100)  
 Fax: 0845 88 55 222 (from outside UK +44 (0) 1753 566101)