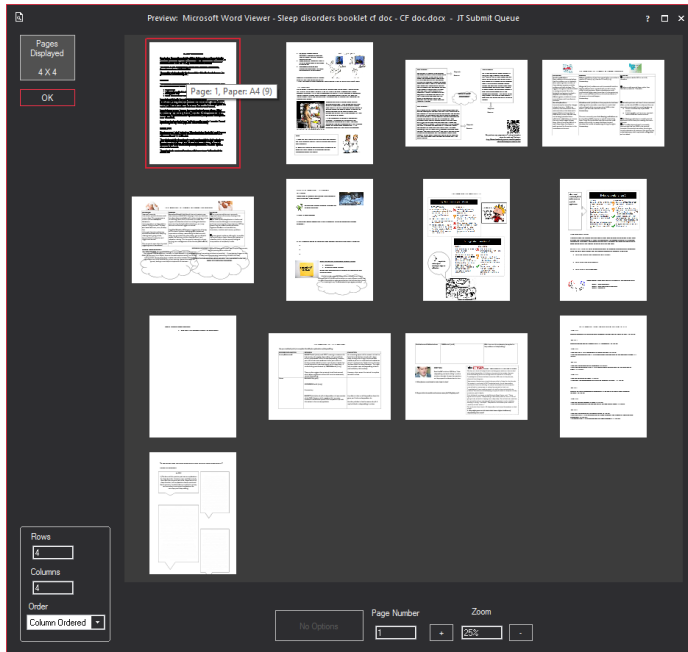
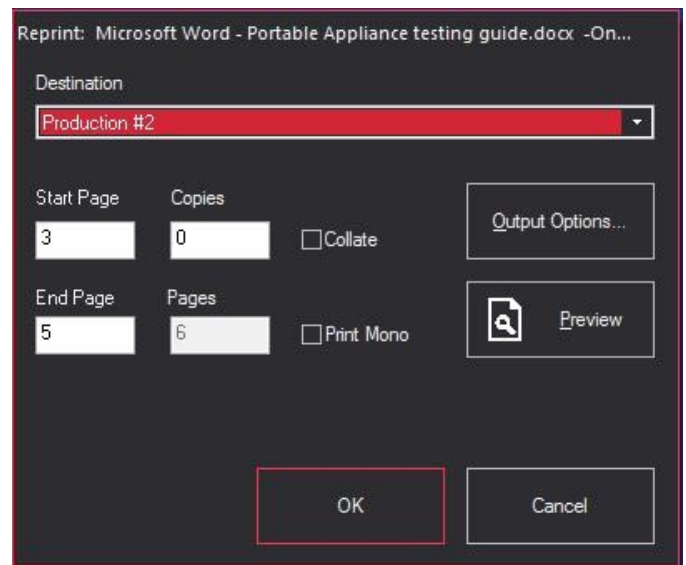


**docQview PCL** and **docQview PostScript** are snap-in modules for docQmanager. The standard product provides job preview and reprint functionality for native Windows data format. These two docQview snap-ins provide the same functionality for data streams that are PCL or PostScript encoded.



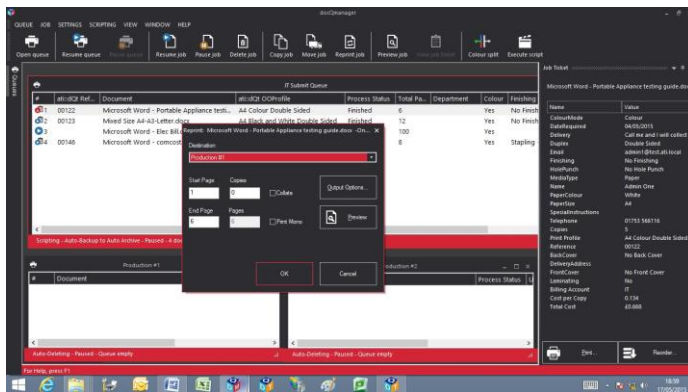
### Preview

Job preview allows jobs or sections of a job to be proofed on screen before committing them to print, to ensure that there are no mistakes in the job content. The preview feature includes options for multi-page thumbnail display, scrolling through the display, as well as a zoom facility to check finer details.



### Reprint

Using the reprint feature, any page or range of pages within a job may be selected for reprint without having to revert to the host application. Reprints may be to the same queue as the original or to a different one. The function includes options for choosing multiple copies of the section to reprint, as well as options to collate or not.



### Features of docQview

- Supports PCL & PostScript encoded print datastreams
- PCL support PCL5e, 5c and PCL-6/XL and all previous versions
- PostScript support Level 3 and all previous versions
- Preview jobs before print or reprint
- Multi page display and zoom options
- Reprint any page(s) without reverting to host application

### Data streams supported

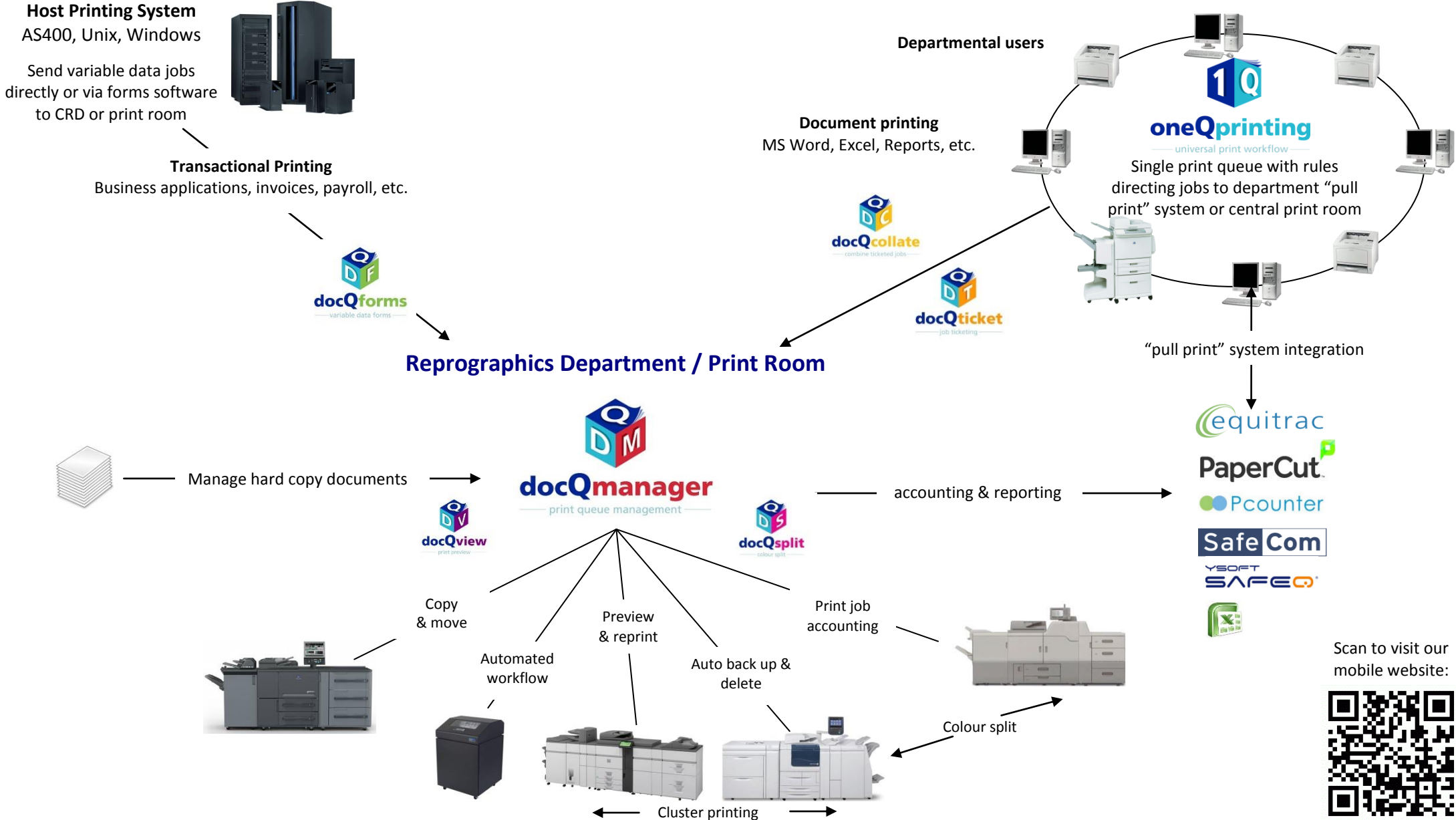
PCL support:

PCL4, PCL5, PCL5e, 5c and PCL-6/XL

PostScript support:

Adobe PostScript Level 2 and Level 3

# ATI output management software – bridging office & production print



Scan to visit our mobile website:

