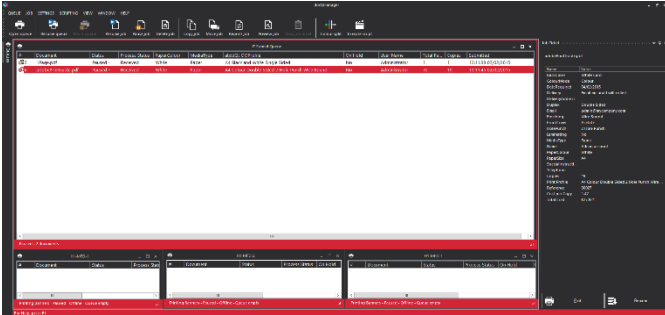


**docQmanager** is the core module in the ATI print management product family. It provides powerful, simple to use drag and drop print job management for production printing, whether it be documents in a Central Reprographics Department (CRD), transactional print output from an IT Data Centre, or as a common central spooling device for managing jobs between disparate departmental networks.



### Features of docQmanager

- Works with transactional data & document jobs
- “Hold & release” with simple drag & drop
- Job preview and reprint any page(s)
- Customisable user interface
- Print clustering with page or set split
- User defined automated job archive & deletion
- Print activity logging and accounting
- Add-on modules for extended functionality

### Add on modules to docQmanager

- docQview** – for viewing PCL and PostScript data jobs
- docQticket** – for job submission with a ticket
- docQcollate** – combines jobs for ticketing
- docQsplit** – to split colour and mono pages within a job
- OneQ** – server and connector – for OneQ “pull-printing”

### Hold & release - copy & move

Simple drag and drop functionality to allocate jobs to devices, enables print jobs to be prioritised so that printer utilisation and productivity are maximised.

### Preview and reprint

Jobs may be previewed on screen before committing to print. Any page or section of a job may be selected for printing or reprint without reverting to the original application.

### Customisable user interface

Displayed queue information may be modified and queue displays freely arranged to match operators’ needs, including the display of job ticket parameters.

### Clustering

Large time critical jobs can be automatically split and spread across several clustered printers to save cost and meet deadlines. For example 2 x 135ppm and 2 x 85ppm devices may be clustered to give a virtual 440ppm printer. Jobs are split intelligently by page range or set and apportioned to the devices relative to their speed

### Load balancing

Printer groups can be configured for “round robin” distribution or load balancing to automatically send print jobs to the first available printer. Printer state is checked using SNMP to automatically bypass non-working printers.

### Automated print workflow

A powerful scripting feature enables automation of print room workflow. Jobs may be routed according to pre-set criteria such as job information details and printer status. User notification may be made by client-less pop-up messages or e-mail.

### Job administration

Automatic job archive and deletion after user specified time facilitates good job housekeeping and management for retrieval and reprint.

### Activity reporting

All print job activity is logged and available for export to external reporting systems of choice. Where third party print job accounting systems are employed docQmanager retains the key job parameters to maintain integrity of accounting.

### Mixed networks

Printer output from disparate network systems can be co-ordinated by making docQmanager the common central print spooler system. It is simple for UNIX, mainframe, Novell, Windows and other users to submit jobs to docQmanager. From here the print room operator has a single familiar control point for managing all print jobs and printers.

### Flexibility

docQmanager supports all the primary print languages enabling it to work with most manufacturers’ printing devices. When the time comes for printer hardware to be replaced, you can be confident that docQmanager will help you maintain the productivity of the department by supporting your new print devices out of the box.

# ATI output management software – bridging office & production print



**Host Printing System**  
AS400, Unix, Windows

Send variable data jobs directly or via forms software to CRD or print room



**Transactional Printing**  
Business applications, invoices, payroll, etc.

OBJECTIF LUNE  
PlanetPress



## Reprographics Department / Print Room



Manage hard copy documents

**docQmanager**  
print queue management

docQview  
docQsplit



Copy & move



Automated workflow



Preview & reprint

Auto back up & delete



Cluster printing

Print job accounting



Colour split

accounting and reporting

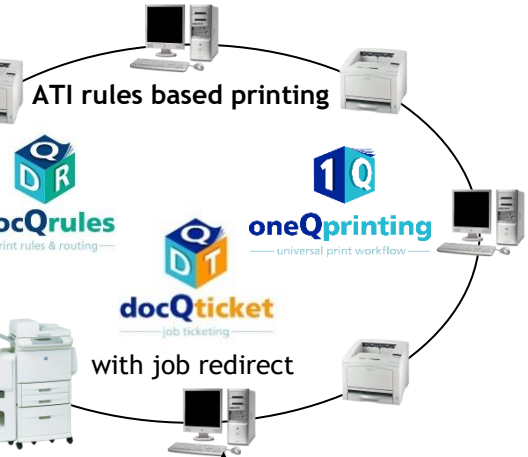


“pull print” system integration

equitrac  
PaperCut  
Pcounter  
Safe Com  
YSOFT  
myQ  
STREAMLINE NX®

Departmental users

**Document printing**  
MS Word, Excel, Reports, etc.



ATI rules based printing



with job redirect

Scan to visit our mobile website:

