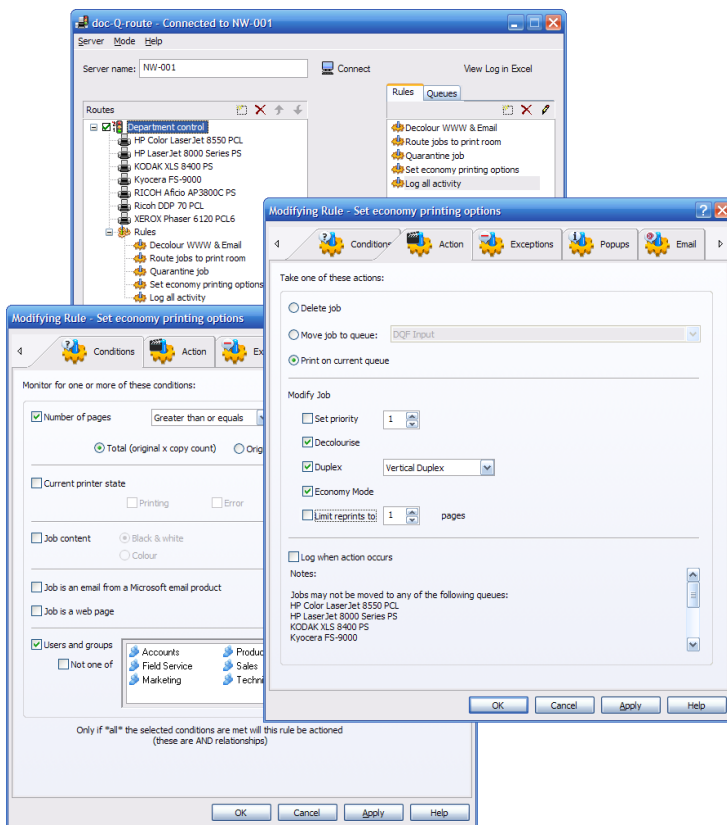
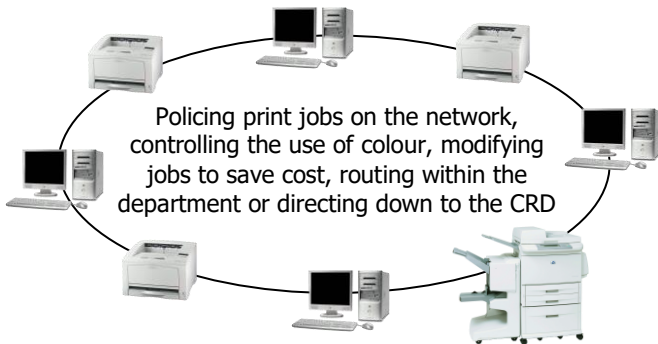


docRules enables organisations to apply rules based network print control to reduce costs and support “green” strategy policies. As a separate and distinct product it complements docQmanager by sitting out on the network print server(s) to monitor and police departmental print job activity. It can both modify jobs (e.g. decolourise and limit pages printed) and route jobs based on pre-set criteria. Combined with docQticket it enforces the submission of relevant jobs to the Central Reprographics Department (CRD) to be managed by docQmanager.



### Printing cost control

With the proliferation of small, higher cost per copy departmental printers, a lot of which are colour capable, the total cost of printing within many organisations has escalated. docRules provides a tool for policing print jobs on the network and modifying and routing jobs to help control such costs.

### Increase use of print room

For organisations with a CRD function, maximising CRD print volume is key to optimising the ROI. docRules helps capture CRD print volume by policing for large jobs and linking into ATI’s job ticketing software for submission to the CRD.

### Simple administrator set up

Configuration set up and on-going management of rules and routing is provided by a simple to use administrator user interface which can be operated remotely from the docRules print server. Rules and exceptions may be set for individuals and multiple users and by Active Directory Groups.

### Flexible messaging

Automatic messaging to users by way of “pop-up” or e-mail can be configured by the administrator. This may be to inform users of print actions taken, or merely advisory e.g. to warn users of policy directives and that a job was of such a size it should have gone to the CRD.

### Advanced mode scripting

To address even more complex user requirements there is an “Advanced” mode which draws on a powerful scripting language to define more sophisticated print workflow and reporting.

### Activity logging and reporting

In its simplest functional form, docRules may be set to merely record all print activity of a print server in the form of an audit log. A free report generating tool is available to assist administrators with the analysis of such logs.

### Features of docRules

- Controls use of colour
- Decolourises emails and web page printing
- Limits number of pages printed
- Enforces duplex and economy modes
- Routes print jobs as defined
- Allows exceptions to rules
- Simple administrator set up
- Flexible messaging to notify users
- Advanced mode with powerful scripting
- Full activity logging and reporting
- Small business version edition

# ATI output management software – bridging office & production print



**Host Printing System**  
AS400, Unix, Windows

Send variable data jobs directly or via forms software to CRD or print room



**Transactional Printing**  
Business applications, invoices, payroll, etc.

OBJECTIF LUNE  
PlanetPress



## Reprographics Department / Print Room



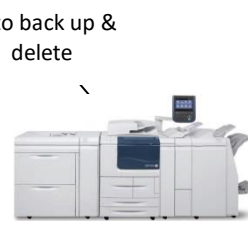
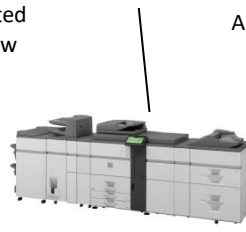
Manage hard copy documents

**docQmanager**  
print queue management

docQview  
docQsplit



Copy & move



Cluster printing

Automated workflow

Preview & reprint

Auto back up & delete

Print job accounting

accounting and reporting

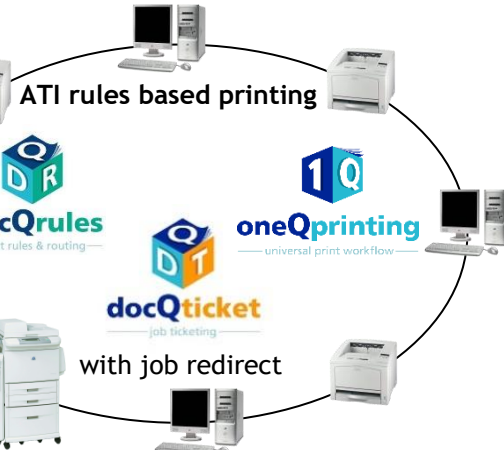


Colour split



Departmental users

**Document printing**  
MS Word, Excel, Reports, etc.



“pull print” system integration

equitrac  
PaperCut  
Pcounter  
Safe Com  
YSOFT  
myQ  
STREAMLINE NX®

Scan to visit our mobile website:

